

UNIVERSAL ACCESSIBILITY  
**CHECKLIST** FOR THE  
**NIGERIAN BUILT**  
**ENVIRONMENT**  
(SIMPLIFIED VERSION)





# Universal Accessibility Checklist for the Nigerian Built Environment

**T**his checklist provides tools for measurement and estimations in the assessment of universal accessibility within the Nigerian built environment. It is intended to ensure that public buildings, roads, indoor and outdoor spaces, goods, services, programs and information are readily available to people with disabilities on an equal basis with the rest of the public.

Therefore all stakeholders must ensure that the design and construction of new public facilities, the services to be delivered, the programs and activities to be carried out within and around the facilities, when viewed in their entirety, should be accessible to people with disabilities. For existing facilities that accessibility considerations were not made in their design and/or construction, major alteration may be recommended if necessary, to ensure accessibility to people with various forms and degrees of disability.

Businesses, institutions and organizations must remove design and construction barriers when it is “readily achievable” to do so. In other words, when barrier removal is “accomplishable and able to be carried out without much difficulty or at a moderate cost.”

The decision of what is readily achievable is made by the Team of Assessors having considered the scope, type, and overall cost of the public facility and the nature and cost of the access improvements needed. Barrier removal considered difficult at one time may be considered readily achievable in the future when conditions are favourable.

## Checklist

### PLAN THE ASSESSMENT

It is recommended that an inclusive team of not less than three persons to conduct this evaluation. While one person is taking measurements and calculating, another person can fill out the checklist and taking notes and another having a physical test and snapping photos.

### Get the Floor Plan or Sketch of Facility

A floor plan helps the assessors to get organized and to know how many elements there are, such as entrances, spaces and fixtures. If plans are not available, a human-guide may be required.

### Make Copies of the Checklist

Determine how many copies of each section of the checklist you need.

### Materials Needed

- Copies of Checklist and Facility Plan
- Writing Materials
- Measuring Tape
- Electronic or Carpenter's Leveling Tools
- Personal Protective Equipment (PPE)
- Camera (with GPS features)
- Stop Watch
- Bag to hold these items



## Priority Ranking

The checklist uses a four level ranking system i.e. from Level 1 (highest) to Level 4 (least) of the built environment as listed below:

**Level 1** - Accessible approach, entrance and wayfinding in buildings and facilities. This constitutes 40% weight of the facility's total score.

**Level 2** - Accessible goods/services being offered at a facility. This constitutes 30% weight of the facility's total score.

**Level 3** - Accessible Furniture, Fixtures and Utilities (Doors, Water, Toilets and Washrooms). This constitutes 20% weight of the facility's total score.

**Level 4** - Accessible additional amenities. This constitutes 10% weight of the facility's total score.

## **REGULATION FOR ACCESSIBILITY BUILT ENVIRONMENT**

The checklist is based on the “Persons with Disabilities (Accessibility) Regulations, 2023”. The checklist does not include all sections of the Regulations such as requirements for nondiscriminatory policies and practices and for the provision of auxiliary aids and services. Consult the Persons with Disabilities (Accessibility) Regulations, 2023 for situations that are not covered in this checklist. Full compliance to the provisions of the Regulations is required for new construction but different levels of alterations may be recommended for existing facilities in the built environment.

## **CONDUCTING THE ASSESSMENT**

### **From Outside to Indoors**

Begin survey of the facility from arrival points such as parking areas and sidewalks. If there is a parking lot or garage, check for the adequate number of accessible parking spaces. Determine if there is an accessible walkway to an accessible entrance. Is there an accessible route from the accessible parking spaces to an accessible entrance? Next, you survey the entrances. If there is an accessible entrance, determine if there are signs at inaccessible entrances directing people to the accessible entrance. Go inside and continue through the facility.

### **Keep Good Notes**

Make sure you fill the details of the facility being assessed. For instance, you may end up with six toilet room checklists. When you get back to your office you'll want to know which one is the checklist for the top floor ladies' toilet. If there isn't an accessible entrance you'll want to indicate how many steps there are and how much space is available to install a ramp or lift. This is a good time to take photographs.





## Public Facilities as Defined

Public facilities referred in this document include all facilities for public use. This means that both a landlord who leases space in a building to a tenant and the tenant who operates the space in a public facility have responsibilities to make both the facility and its services accessible to people with disabilities.

## Sections of the Checklist

Based on the function and operations, the public facilities fall within at least one of the following categories:

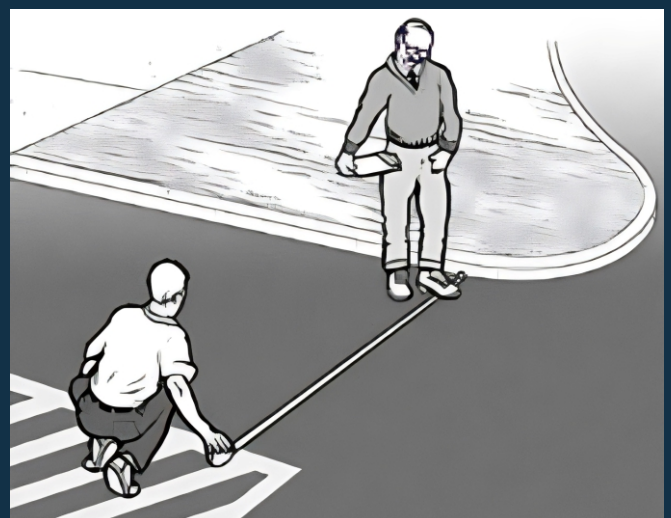
1. Accommodation Facilities such as: Guest Houses, Hotels, Motels, Hostels etc. except for owner-occupied facilities having less than six rooms).
2. Banks, Corporate and Professional Offices.
3. Health Facilities (e.g. Hospitals, Clinics, Laboratories).
4. Educational and Social Care Establishments (e.g. Day-Care Centres, Orphanages, NYSC Camps, Colleges, Universities and Religious Centres).

## Take Good Measurements

When in doubt write it down. It's better to have too much information than not enough. Even if something is in compliance it's helpful to have exact measurements.

## Parking Spaces

Measure from the center of marking lines. If lines are not adjacent to another space or aisle the measurement can be to the full width of the line.





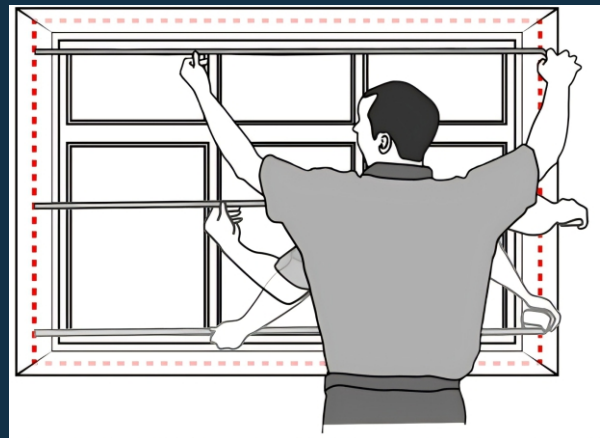
## Check that You Got Everything

Before you leave the site. Review all the checklists. Make sure you know which checklist goes with which element and that you have gotten all the information you need. It is better to do it in-situ than to have to return for re-assessment.

For each question indicate YES or NO and add measurements where appropriate, otherwise write N/A i.e. Not Applicable on the Related Remark column as the case might be. Some of the questions have explanatory notes after them. There is also room to enter comments and the photo number if one of the surveyors is taking photos. Most of the questions include suggested possible solutions that the team may consider or they can suggest other solutions entirely. Please add other element-checks not more than the number of N/A marked checks in each LEVEL, if majority of the team considers them important and/or unique to a particular facility.

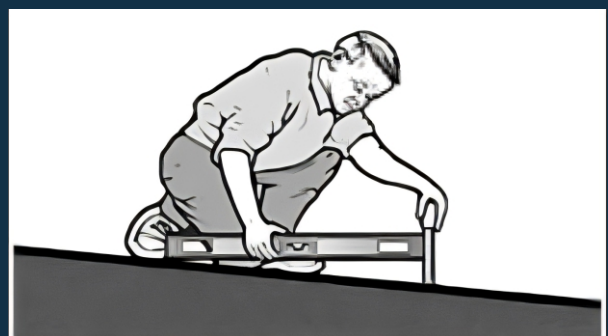
## Door Clear Width

Open the door 90 degrees, measure from the face of the door to the edge of the door stop, making sure the tape is kept parallel to the floor.



## Accessible Slopes

You can measure slope with a Level and a Tape measure. Put the Level on the surface in the direction you are measuring. Put one end at the high point of the surface and raise the other end so that the bubble is in the middle of the Level's gauge. The Level is now okay. Measure the distance between the end of the level at its bottom point and the surface. For a ramp the maximum running slope allowed is 1:12.







# SECTION ONE

Accommodation Facilities such as:  
Guest Houses, Hotels, Motels, Hostels etc.  
except for owner-occupied  
facilities having less than six rooms).

**LEVEL 1** – Accessible approach, entrance and wayfinding in buildings and facilities.

S/No	CHECK	RESPONSE	PICTURE No.	REFERENCE	RELATED REMARK	POSSIBLE SOLUTIONS
1	Is the building easily identifiable with a branding or sign having contrasting colour and accessible typefacing for the fonts?					
2	Is there at least one route from site arrival points (parking, passenger loading zones, pedestrian sidewalk and public transportation stops) that does not require the use of stairs?	Yes No If yes, location of route:				Add a ramp Regrade to 1:20 maximum slope Add a lift if site constraints prevent other solutions
3	If parking is provided for the public, are there adequate numbers of accessible spaces provided?	Yes No Total No: No of Accessible:				Reconfigure by repainting lines
4	Are the access aisles marked so as to discourage parking in them?	Yes No				Mark access aisles
5	Is the slope of the accessible parking spaces and access aisles no steeper than 1:4.8 in all directions?	Yes No Measurement:				Regrade surface
6	Do the access aisles adjoin an accessible route width of 900mm minimum?	Yes No Measurement:				Create accessible route and relocate accessible spaces

<b>7</b>	Are accessible spaces identified in the parking lot with a sign that includes the International Symbol of Accessibility						Install signs
<b>8</b>	Of the total parking spaces, are the accessible spaces located on the closest accessible route to the accessible entrances(s)?						Reconfigure spaces
<b>9</b>	Is the exterior route stable, firm, slip-resistant and marked with tactile paving?	Yes	No				Repair uneven paving, fill small bumps and breaks with patches, replace gravel with asphalt or other firm and slip resistant surfaces.
<b>10</b>	Is the route at least 900mm wide?	Yes	No	Measurement:			Change or move landscaping, furnishings or other items, and widen route
<b>11</b>	If the route is greater than 6100mm in length and less than 1500mm wide, is there a passing space no less than 1500mm x 1500mm?	Yes	No	Measurement:			Widen route for passing space
<b>12</b>	Is the running slope's steepness less than 1:20, i.e. for every 25mm of	Yes	No	Measurement:			Regrade to 1:20 max, otherwise treat as a ramp



13	If there is a ramp is it at least 900mm wide?	Yes No Measurement:				Alter ramp
14	Is the surface of the ramp stable, firm and slip resistant?	Yes No				Resurface ramp
15	For each section of the ramp, is the running slope no greater than 1:12, i.e. for every 1mm of height change there are at least 12 mm of ramp run?	Yes No Measurement:				Relocate ramp lengthen ramp to decrease slope
16	Is there a level landing that is at least 1500mm long and at least as wide as a ramp:	At the top of the ramp? Yes No Measurement: At the bottom of the ramp? Yes No Measurement:				Alter ramp Increase landing size
17	If the ramp has a rise higher than 150mm, are there handrails on both sides?	Yes No Measurement:				Add handrails
18	Is the top of the handrail gripping surface no less than 860mm and no greater than 960mm above the ramp surface?	Yes No Measurement:				Reconfigure or replace handrails Adjust handrail height
19	Is the handrail gripping surface continuous and not obstructed along the top or sides?	Yes No Measurement:				Reconfigure or replace handrails

20	To prevent wheelchair casters and crutch tips from falling off: Does the surface of the ramp extend at least 300mm beyond the inside face of the handrail?	Yes No Measurement:				Add curb, add barrier, extend ramp width
21	Is the main entrance accessible?	Yes No				Redesign to make it accessible
22	If the main entrance is not accessible, is there an alternative accessible entrance?	Yes No				Designate an entrance and make it accessible.
23	Can the alternative accessible entrance be used independently and during the same hours as the main entrance?	Yes No				Ensure that accessible entrance can be used independently and during the same hours as the main entrance
24	Do all inaccessible entrances have signs indicating the location of the nearest accessible entrance using the international symbol of accessibility? ♿	Yes No				Install signs on route before people get to inaccessible entrances so that people do not have to turn around and retrace route
25	Is the step riser 150mm or less?	Yes No				Resurface ramp
26	Is the clear opening width of the accessible entrance door at least	Yes No Measurement:				Alter door, install offset hinges

27	On both sides of the door, is the ground or floor surface of the maneuvering clearance level (no steeper than 1:48)?	Yes No Measurement:				Remove obstruction, reconfigure walls, add automatic door opener
28	Is the door equipped with hardware that is operable with one hand and does not require tight grasping, pinching or twisting of the wrist?	Yes No				Replace inaccessible knob with lever, loop or push hardware, add automatic door opener
29	Are the operable parts of the door hardware no less than 860mm and 1220mm above the floor or ground surface?	Yes No				Change hardware height
30	If provided at the building entrance, are carpets or mats no higher than 25mm thick?	Yes No Measurement?				Replace or remove mat
31	Are edges of carpets or mats securely attached to minimize tripping hazard	Yes No				Secure carpeting or mats at edges

**LEVEL 2 – Accessible goods/services being offered at a facility.**

S/No	CHECK	RESPONSE	PICTURE No.	REFERENCE	RELATED REMARK	POSSIBLE SOLUTIONS
1	Does the accessible entrance provide direct access to the reception, main floor, lobby and elevator?	Yes No				Create accessible route
2	Are all public spaces on at least one accessible route?	Yes No Total No Public Spaces: No of Accessible Public Spaces:				Create accessible route
3	Do all objects on circulation paths through public areas, e.g. fire extinguishers, drinking fountains, signs, etc., protrude no more than 100mm into the path?	Yes No				Remove objects, add tactile warning such as permanent planter or partial walls
4	If there is a counter at the reception, is there a portion of the top no less than 712mm and no greater than 864mm above the floor?	Yes No				Alter height or provide an alternative.
5	Is there a clear floor space at least 760mm wide by at least 1220mm long for a forward or parallel approach to the counter?	Yes No				Reconfigure to provide a parallel or forward approach
6	Are there elevators or platforms lifts if facility is more than 2-stories?	Yes No				Install elevator or lift if necessary, offer goods and services on an accessible story

<b>7</b>	If any portion of the accessible route is steeper than 1:20, it should be treated as a ramp.	Yes	No					<b>Alter ramp</b>
<b>8</b>	Are Handrails Accessible?	Yes	No					Alter Handrails
<b>9</b>	Is the surface of the service area stable, firm, slip-resistant and tactile marked?	Yes	No					Resurface Area
<b>10</b>	Does the sliding door of the elevator reopen automatically when obstructed by an object or person?	Yes	No					Alter Elevator operations
<b>11</b>	Is the interior of the full size elevator at least 1400mm deep by at least 910mm wide with at least 1.5 sqm. of clear floor area?	Yes	No					Replace elevator
<b>12</b>	If a lift is provided, can it be used without assistance from others?	Yes	No					Reconfigure so independently operable
<b>13</b>	Are the lift controls no less than 380mm and no greater than 1220mm above the floor?	Yes	No					Change control height
<b>14</b>	Do text characters e.g. room numbers and letters, room names, and exit signs contrast with their backgrounds?	Yes	No					
<b>15</b>	Are text characters e.g. room numbers and letters, room names, and exit signs raised?	Yes	No					



16	Is there Braille option for room numbers, and other signs?	Yes No					
<b>17</b>	If there are signs that provide direction to or information about interior spaces: Do text characters contrast with their backgrounds?	Yes	No				Install signs with contrasting characters
<b>18</b>	Are there doors equipped with hardware that is operable with one hand and does not require tight grasping, pinching or twisting of the wrist?	Yes	No				Replace inaccessible knob with lever, loop or push hardware and add automatic door opener
<b>19</b>	Are the operable parts e.g. Light Switches and Taps no higher than 1220mm above the floor?	Yes	No				Change height of control
<b>20</b>	Can the control be operated with one hand and without tight grasping, pinching, or twisting of the wrist?	Yes	No				Replace control

**LEVEL 3 – Accessible Furniture, Fixtures and Utilities (Doors, Water, Toilets, Washrooms, Kitchen and Gym).**

S/No	CHECK	RESPONSE	PICTURE No.	REFERENCE	RELATED REMARK	POSSIBLE SOLUTIONS
1	If toilet rooms are available to the public, are there toilet rooms accessible? (Either for each sex, or unisex.)	Yes No Total No Public Toilets: No of Accessible Public Toilets:				Reconfigure toilet rooms, combine toilet rooms to create one unisex accessible toilet room
2	Are there signs at inaccessible toilet rooms that give directions to accessible toilet rooms?	Yes No Total No Public Spaces: No of Accessible Public Spaces:				Install signs, Install tactile sign
3	If not all toilet rooms are accessible, is there a sign at the accessible toilet room with the International Symbol of Accessibility?	Yes No				Install sign
4	Is there a route to the accessible toilet room(s) that does not include the use of stairs?	Yes No				Alter route
5	On the signs at Toilet Rooms, do text characters contrast with their backgrounds?	Yes No				Alter sign
6	On the signs at Toilet Rooms, are text characters raised?	Yes No				Alter sign
7	On the signs at Toilet Rooms, is there Braille?	Yes No				Install Braille
8	Can the door be opened easily using one hand?	Yes No				Install lighter doors, install power-assisted or automatic doors

9	In the Toilet Room, is there a clear path to at least one of each type of fixture, e.g. Water Closet, Wash Basin, etc., that is at least 910mm wide?	Yes No					Remove obstructions
10	Is there clear floor space available for a person in a wheelchair to turn around, i.e. a circle at least 1520mm in diameter or a T-shaped space within a 1520mm square in room and Toilet?	Yes No					Move or remove partitions, fixtures or objects such as trash cans.
11	Is the bottom edge of the reflecting surface of the Mirror no higher than 1020mm above the floor?	Yes No					Reposition
12	Are the toilet fittings in colours contrasting with the wall and floor colours to be easily identifiable by persons with low vision?	Yes No Measurement:					Repaint
13	If there is a coat hook or hanger, is it no less than 380mm and no greater than 1220mm above the floor?	Yes No					Reposition
14	Are pipes and electrical points insulated or otherwise configured to protect against contact?	Yes No					Install insulation, install cover panel
15	Can the faucet be operated easily?	Yes No					Adjust faucet, replace faucet

<b>16</b>	Is there a grab bar at least 1070mm long on the side wall?	Yes	No				Install a grab bar.
<b>17</b>	Is the space between the wall and the grab bar 40mm?	Yes	No				Reconfigure grab bar
<b>18</b>	If the flush control is hand operated, is the operable part located no higher than 1220mm above the floor?	Yes	No				Move control, install sensor with override button no higher than 1220mm
<b>19</b>	Are controls, install sensor with override button no higher than 1220mm.	Yes	No				Relocate dispenser
<b>20</b>	Do furniture contrast visually with surroundings?	Yes	No			NAR23.11.19.09	Repaint the furniture or the surroundings
<b>21</b>	Are the tops of beds not higher than 480mm from floor?	Yes	No			NAR23.11.19.09.1	Replace furniture
<b>22</b>	Is baggage storage not higher than 1220mm from the floor?	Yes	No			NAR23.9.05 (2)	Relocate Storage
<b>23</b>	Is baggage storage not lower than 460mm from the floor?	Yes	No			NAR23.9.05 (2)	Relocate Storage
<b>24</b>	Is baggage storage not deeper than 510mm from the floor?	Yes	No			NAR23.9.05 (2)	Relocate Storage

## LEVEL 4 - Additional Access to other Amenities

S/No	CHECK	RESPONSE	PICTURE No.	REFERENCE	RELATED REMARK	POSSIBLE SOLUTIONS
1	Does the room telephone have a clear floor space at least 760mm wide and at least 1220mm long for a parallel or forward approach?	Yes No				Move telephone, install new telephone for clear floor space
2	Does at least one telephone have a volume control?	Yes No				Install volume control, replace telephone with one that has volume control
3	Does at least one telephone have a Teletypewriter (TTY)?	Yes No				Install Teletypewriter (TTY)
4	Do signs that provide direction to public telephones also provide direction to the TTY?	Yes No				Add signs
5	If there are fire alarm systems, do they have both flashing lights and audible signals?	Yes No				Install audible and visual alarms. The visual feature in the alarm will serve persons with hearing impairment while the audio feature serves all including the blind.
6	Is at least one emergency exit and one muster point accessible?	Yes No				





# SECTION TWO



Altabank

Banks, Corporate and  
Professional Offices

**LEVEL 1** – Accessible approach, entrance and wayfinding in buildings and facilities.

S/No	CHECK	RESPONSE	PICTURE No.	REFERENCE	RELATED REMARK	POSSIBLE SOLUTIONS
1	Is the building easily identifiable with a branding or sign having contrasting colour and accessible typefacing for the fonts	Yes No				
2	If parking is provided for the public, are there an adequate number of accessible spaces provided?	Yes No Total No: No of Accessible:				Reconfigure by repainting lines
3	Are the access aisles marked so as to discourage parking in them?	Yes No				Mark access aisles
4	Is there at least one route from site arrival points (parking, passenger loading zones, public sidewalks and public transportation stops) that does not require the use of stairs?	Yes No If yes, location of route:				Add a ramp Regrade to 1:20 maximum slope Add a lift if site constraints prevent other solutions
5	Is the slope of the accessible parking spaces and access aisles no steeper than 1:48 in all directions?	Yes No Measurement:				Regrade surface
6	Do the access aisles adjoin an accessible route width of 910mm minimum?	Yes No Measurement:				Create accessible route and relocate accessible spaces

7	Are accessible spaces identified with a sign that includes the International Symbol of Accessibility	Yes No				Install signs
8	Of the total parking spaces, are the accessible spaces located on the closest accessible route to the accessible entrances(s)?	Yes No				Reconfigure spaces
9	Is the exterior route stable, firm and slip-resistant?	Yes No				Repair uneven paving, fill small bumps and breaks with patches, and replace gravel with asphalt or other surface.
10	Is the route at least 910mm wide?	Yes No Measurement:				Change or move landscaping, furnishings or other items, and widen route
11	If the route is greater than 61m in length and less than 1520mm wide, is there a passing space no less than 1520mm x 1520mm?	Yes No Measurement:				Widen route for passing space
12	Is the running slope no steeper than 1:20, i.e. for every 25mm of height change there are at least 510mm of route run?	Yes No Measurement:				Regrade to 1:20 max, otherwise treat as a ramp & add features such as edge protection & handrails

<b>13</b>	If there is a ramp is it at least 910mm wide?	Yes No Measurement:				Alter ramp
<b>14</b>	Is there are handrails, measure between the handrails?	Yes No Measurement:				Alter ramp
<b>15</b>	Is the surface of the ramp stable, firm and slip resistant?	Yes No				Resurface ramp
<b>16</b>	For each section of the ramp, is the running slope no greater than 1:12, i.e. for every 25mm of height change there are at least 305mm of ramp run?	Yes No Measurement:				Relocate ramp lengthen ramp to decrease slope
<b>17</b>	Is there a level landing that is at least 1520mm long and at least as wide as a ramp:	At the top of the ramp? Yes No Measurement: At the bottom of the ramp? Yes No Measurement:				Alter ramp Increase landing size
<b>18</b>	If the ramp has a rise higher than 152mm, are there handrails on both sides?	Yes No Measurement:				Add handrails
<b>19</b>	Is the top of the handrail gripping surface no less than 864mm and no greater than 965mm above the ramp surface?	Yes No Measurement:				Reconfigure or replace handrails Adjust handrail height

20	Is the handrail gripping surface continuous and not obstructed along the top or sides?	Yes No Measurement:				Reconfigure or replace handrails
21	To Prevent wheelchair casters and crutch tips from falling off: Does the surface of the ramp extend at least 305mm beyond the inside face of the handrail?	Yes No Measurement:				Add curb, add barrier, extend ramp width
22	Is the main entrance accessible?	Yes No				Redesign to make it accessible
23	If the main entrance is not accessible, is there an alternative accessible entrance?	Yes No				Designate an entrance and make it accessible.
24	Can the alternative accessible entrance be used independently and during the same hours as the main entrance?	Yes No				Ensure that accessible entrance can be used independently and during the same hours as the main entrance
25	Do all inaccessible entrances have signs indicating the location of the nearest accessible entrance using the international symbol of accessibility?	Yes No				Install signs on route before people get to inaccessible entrances so that people do not have to turn around and retrace route



<b>26</b>	Is the clear opening width of the accessible entrance door at least 820mm, between the face of the door and the stop, when the door is open 90 degrees?	Yes No Measurement:				Alter door, install offset hinges
<b>27</b>	On both sides of the door, is the ground or floor surface of the maneuvering clearance level (no steeper than 1:48)?	Yes No Measurement:				Remove obstruction, reconfigure walls, add automatic door opener
<b>28</b>	Is the door equipped with hardware that is operable with one hand and does not require tight grasping, pinching or twisting of the wrist?	Yes No				Replace inaccessible knob with lever, loop or push hardware, add automatic door opener
<b>29</b>	Are the operable parts of the door hardware no less than 864mm and 1220mm above the floor or ground surface?	Yes No				Change hardware height
<b>30</b>	If provided at the building entrance, are carpets or mats no higher than 38mm thick?	Yes No Measurement:				Replace or remove mats
<b>31</b>	Are edges of carpets or mats securely attached to minimize tripping hazards?	Yes No				Secure carpeting or mats at edges
<b>32</b>	Is the route to the ATM accessible on wheelchair?					

**LEVEL 2 – Accessible goods/services being offered at a facility.**

S/No	CHECK	RESPONSE	PICTURE No.	REFERENCE	RELATED REMARK	POSSIBLE SOLUTIONS
1	Does the accessible entrance provide direct access to the reception, banking hall, lobby or elevator?	Yes No				Create accessible route
2	Are all service areas such as ATM point, Storage Boxes, Customer Care points having at least one accessible route?	Yes No Total No Public Areas: No of Accessible Public Areas:				Create accessible route
3	Do all objects on circulation paths through public areas, e.g. fire extinguishers, drinking fountains, signs, etc., protrude no more than 102mm into the path?	Yes No				Remove objects, add tactile warning such as permanent planter or partial walls
4	If there is a counter at the reception, is there a portion of the top no less than 712mm and no greater than 864mm above the floor?	Yes No				Alter height or provide an alternative.
5	Is there a clear floor space at least 760mm wide by at least 1220mm long for a forward or parallel approach to the counter?	Yes No				Reconfigure to provide a parallel or forward approach
6	Are there elevators or platforms lifts if facility is more than 2-stories?	Yes No				Install if necessary an elevator or lift if necessary, offer goods & services on an accessible stories

<b>7</b>	If any portion of the accessible route is steeper than 1:20, it should be treated as a ramp.	Yes	No				Alter ramp
<b>8</b>	Are Handrails Accessible?	Yes	No				Alter Handrails
<b>9</b>	Is the surface of the service area stable, firm, slip resistant and tactile marked?	Yes	No				Resurface Area
<b>10</b>	Is there is a full size elevator that the sliding door reopen automatically when obstructed by an object or person?	Yes	No				Alter Elevator operations
<b>11</b>	Is the interior of the full size elevator at least 1370mm deep by at least 910mm wide with at least 1.5 sqm. of clear floor area?	Yes	No				Replace elevator
<b>12</b>	If a lift is provided, can it be used without assistance from others?	Yes	No				Reconfigure so independently operable
<b>13</b>	Is there a clear floor space at least 760mm wide by at least 1220mm long for a forward or parallel approach?	Yes	No				Reconfigure to provide a parallel or forward approach
<b>14</b>	Do text characters e.g. office numbers and letters, office names, service areas and exit signs contrast with their backgrounds?	Yes	No				

15	Are text characters e.g. office numbers and letters, office names, service areas and exit signs raised?	Yes No				
16	If there are signs that provide direction to or information about interior spaces: Do text characters contrast with their backgrounds?	Yes No				Install signs with contrasting characters



**LEVEL 3 – Accessible Furniture, Fixtures and Utilities (Doors, Water, Toilets, Washrooms, Kitchen and Gym).**

S/No	CHECK	RESPONSE	PICTURE No.	REFERENCE	RELATED REMARK	POSSIBLE SOLUTIONS
1	If there is a cheque writing surface, is there a portion of the top no less than 712mm and no greater than 864mm above the floor?	Yes No				Alter height or provide an alternative.
2	If there are two doors in a series, e.g. vestibule, is the distance between the doors at least 1220mm plus the width of the doors when swinging into the space?	Yes No				Remove inner door if there is a vestibule with two doors Change door swing
3	Is the space between the crowd control barriers no less than 900mm?	Yes No				
4	If toilet rooms are available to the public, are there toilet rooms accessible? (Either for each sex, or unisex.)	Yes No Total No Public Toilets: No of Accessible Public Toilets:				Reconfigure toilet rooms, combine toilet rooms to create one unisex accessible toilet room
5	Are there signs at inaccessible toilet rooms that give directions to accessible toilet rooms?	Yes No Total No Public Spaces: No of Accessible Public Spaces:				Install signs, Install tactile sign
6	If not all toilet rooms are accessible, is there a sign at the accessible toilet room with the International Symbol of Accessibility?	Yes No				Install sign

<b>7</b>	Is there a route to the accessible toilet room(s) that does not include the use of stairs?	Yes	No					<b>Alter route</b>
<b>8</b>	On the signs at Toilet Rooms, do text characters contrast with their backgrounds?	Yes	No					Alter sign
<b>9</b>	On the signs at Toilet Rooms, are text characters raised?	Yes	No					Alter sign
<b>10</b>	On the signs at Toilet Rooms, is there Braille?	Yes	No					Install Braille
<b>11</b>	Can the door be opened easily using one hand?	Yes	No					Install lighter doors, install power-assisted or automatic door openers
<b>12</b>	In the Toilet Room, is there a clear path to at least one of each type of fixture, e.g. Water Closet, Wash Basin, etc., that is at least 910mm wide?	Yes	No					Remove obstructions
<b>13</b>	Are the toilet fittings in colours contrasting with the wall and floor colours to be easily identifiable by persons with low vision?	Yes	No					Repaint
<b>14</b>	Is there clear floor space available for a person in a wheelchair to turn around, i.e. a circle at least 1525mm in diameter or a T-shaped space within a 1525mm square?	Yes	No					Move or remove partitions, fixtures or objects such as trash cans.

<b>15</b>	Is the bottom edge of the reflecting surface of the Mirror no higher than 1016mm above the floor?	Yes	No					<b>Reposition</b>
<b>16</b>	If there is a coat hook, is it no less than 380mm and no greater than 1220mm above the floor?	Yes	No					Reposition
<b>17</b>	Are pipes insulated or otherwise configured to protect against contact?	Yes	No					Install insulation, install cover panel
<b>18</b>	Can the faucet be operated easily?	Yes	No					Adjust faucet, replace faucet
<b>19</b>	Is there a grab bar at least 1070mm long on the side wall?	Yes	No					Install a grab bar.
<b>20</b>	Is the space between the wall and the grab bar 40mm?	Yes	No					Reconfigure grab bar
<b>21</b>	If the flush control is hand operated, is the operable part located no higher than 1220mm above the floor?	Yes	No					
<b>22</b>	Is the move control, install sensor with override button no higher than 1220mm?	Yes	No					Move control, install sensor with override button no higher than 1220mm.

**LEVEL 4 – Additional Access to other Amenities**

S/No	CHECK	RESPONSE	PICTURE No.	REFERENCE	RELATED REMARK	POSSIBLE SOLUTIONS
<b>1</b>	If there is a storage box at the entrance, is the top no less than 712mm and no greater than 864mm above the floor?	Yes No				
<b>2</b>	If there are multiple drinking fountains, are there for both people standing and people sitting.	Yes No				Install both options
<b>3</b>	Is there an accessible Automated Teller Machine with Braille option and voicing features?	Yes No				Install one
<b>4</b>	If there are fire alarm systems, do they have both flashing lights and audible signals?	Yes No				Install audible and visual alarms
<b>5</b>	Is at least one emergency exit and one muster point accessible?	Yes No				





# SECTION THREE

Health Facilities e.g.  
Hospitals and Clinics

**LEVEL 1 – Accessible approach, entrance and wayfinding in buildings and facilities.**

S/No	CHECK	RESPONSE	PICTURE No.	REFERENCE	RELATED REMARK	POSSIBLE SOLUTIONS
1	Is the building easily identifiable with a branding or sign having contrasting colour and accessible typefacing for the fonts?	Yes No				
2	If parking is provided for the public, are there adequate numbers of accessible spaces provided?	Yes No Total No: No. of Accessible:				Reconfigure by repainting lines
3	Are the access aisles marked so as to discourage parking in them?	Yes No				Mark access aisles
4	Is there at least one route from site arrival points (parking, passenger loading zones, publicsidewalks and public transportation stops) that leads to the patient Waiting Area?	Yes No				
5	Is there at least one route from site arrival points (parking, passenger loading zones, publicsidewalks and public transportation stops) that leads to the Accident and Emergency Ward?	Yes No				Create a route at least 3m wide for an ambulance.
6	Is there roads from site arriving points (parking, passenger loading zones, public sidewalks and public transportation stops) that leads to Out patient clinic?	Yes No				

<b>7</b>	Is the slope of the accessible parking spaces and access aisles no steeper than 1:4.8 in all directions?	Yes No Measurement:				Regrade surface
<b>8</b>	Do the access aisles adjoin an accessible route width of 910mm minimum?	Yes No Measurement:				Create accessible route and relocate accessible spaces
<b>9</b>	Are accessible spaces identified with a sign that includes the International Symbol of Accessibility?	Yes No				Install signs
<b>10</b>	Of the total parking spaces, are the accessible spaces located on the closest accessible route to the accessible entrances(s)?	Yes No				Reconfigure spaces
<b>11</b>	Is the exterior route stable, firm, slip-resistant and tactile marked?	Yes No				Repair uneven paving, fill small bumps and breaks with patches, replace gravel with asphalt or other surface.
<b>12</b>	Is the route at least 910mm wide?	Yes No Measurement:				Change or move landscaping, furnishings or other items, and widen route
<b>13</b>	If the route is greater than 61m in length and less than 1525mm wide, is there a passing space no less than 1525mm x 1525mm?	Yes No Measurement:				Widen route for passing space

14	Is the running slope no steeper than 1:20, i.e. for every 25mm of height change there are at least 510mm of route run?	Yes No Measurement:				Regrade to 1:20 max, otherwise treat as a ramp and add features such as edge protection and handrails
15	Is the step riser 150mm or less?	Yes No				Resurface ramp
16	Is there either a ramp or elevator alternative that lead to Patient Areas that are above ground level.	Yes No				
17	Is there either a ramp or elevator alternative that lead to Out Patient Clinic?	Yes No				
18	If there is a ramp is it at least 910mm wide?	Yes No Measurement:				Alter ramp
19	If there are handrails, measure between the handrails?	Yes No Measurement:				Alter ramp
20	Is the surface of the ramp stable, firm and slip resistant?	Yes No				Resurface ramp
21	For each section of the ramp, is the running slope no greater than 1:12, i.e. for every 25mm of height change there are at least 300mm of ramp run?	Yes No Measurement:				Relocate ramp lengthen ramp to decrease slope
22	Is there a level landing that is at least 1525mm long and at least as wide as a ramp:	At the top of the ramp? Yes No				Alter ramp Increase landing size

<b>23</b>	If the ramp has a rise higher than 152mm, are there handrails on both sides?	Yes No Measurement:				Add handrails
<b>24</b>	Is the top of the handrail gripping surface no less than 864mm and no greater than 965mm above the ramp surface?	Yes No Measurement:				Reconfigure or replace handrails Adjust handrail height
<b>25</b>	Is the handrail gripping surface continuous and not obstructed along the top or sides?	Yes No Measurement:				Reconfigure or replace handrails
<b>26</b>	To prevent wheelchair casters and crutch tips from falling off: Does the surface of the ramp extend at least 300mm beyond the inside face of the handrail?	Yes No Measurement:				Add curb, add barrier, extend ramp width
<b>27</b>	Is the main entrance accessible?	Yes No				Redesign to make it accessible
<b>28</b>	If the main entrance is not accessible, is there an alternative accessible entrance?	Yes No				Designate an entrance and make it accessible. Ensure that accessible entrance can be used independently and during the same hours as the main entrance
<b>29</b>	Can the alternative accessible entrance be used independently and during the same hours as the main entrance?	Yes No				

30	Do all inaccessible entrances have signs indicating the location of the nearest accessible entrance using the international symbol of accessibility?	Yes No				Install signs on route before people get to inaccessible entrances so that people do not have to turn around and retrace route
<b>31</b>	Is the clear opening width of the accessible entrance door at least 820mm, between the face of the door and the stop, when the door is open 90 degrees?	Yes No Measurement:				Alter door, install offset hinges
<b>32</b>	On both sides of the door, is the ground or floor surface of the maneuvering clearance level (no steeper than 1:4.8)?	Yes No Measurement:				Remove obstruction, reconfigure walls, add automatic door opener

**LEVEL 2 - Accessible/services being offered at a facility.**

S/No	CHECK	RESPONSE	PICTURE No.	REFERENCE	RELATED REMARK	POSSIBLE SOLUTIONS
1	Does the accessible entrance provide direct access to the reception, waiting area, lobby or elevator?	Yes No				Create accessible route
2	Are service areas such as Cash Points, Wards, Clinics, Pharmacy, Cafeteria and Laboratories having at least one interior accessible route?	Yes No Total No Service Areas: No of Accessible Service Areas:				Create accessible route
3	Do all objects on circulation paths through public areas, e.g. fire extinguishers, drinking fountains, signs, etc., protrude no more than 100mm into the path?	Yes No				Remove objects, add tactile warning such as permanent planter or partial walls
4	Are there marked places, designated for wheelchair users in the patient's waiting area?	Yes No				Mark spaces for patients on wheelchairs in the patient's waiting area.
5	Are there elevators or platforms lifts if facility is more than 2 -stories?	Yes No				Install if necessary an elevator or lift if necessary, offer goods and services on an accessible story.
6	Is any portion of the accessible route steeper than 1:20?	Yes No				Treat as ramp
7	Are Handrails Accessible?	Yes No				Alter Handrails

8	Is the surface of the service areas stable, firm and slip resistant?	Yes No				Resurface Area
<b>9</b>	Is there is a full size elevator that the sliding door reopen automatically when obstructed by an object or person?	Yes No				Alter Elevator operations
<b>10</b>	Is the interior of the full size elevator at least 1400mm deep by at least 910mm wide with at least 1.5 sqm. of clear floor area?	Yes No				Replace elevator
<b>11</b>	If a lift is provided, can it be used without assistance from others?	Yes No				Reconfigure so independently operable
<b>12</b>	If there is a counter, is there a portion of the top no less than 712mm and no greater than 864mm above the floor?	At the Reception Yes No At the Cashpoint Yes No At the Pharmacy Yes No				Alter height or provide an alternative.
<b>13</b>	Is there a clear floor space at least 760mm wide by at least 1220mm long for a forward or parallel approach to the counter?	At the Reception Yes No At the Cashpoint Yes No At the Pharmacy				Reconfigure to provide a parallel or forward approach



<b>14</b>	Do text characters e.g. room numbers and letters, department names, service and exit signs contrast with their backgrounds?	Yes	No				
<b>15</b>	Are text characters on signage e.g. office numbers, office names and exit signs raised?	Yes	No				
<b>16</b>	If there are signs that provide direction to or information about interior spaces: Do text characters contrast with their backgrounds?	Yes	No				Install signs with contrasting characters
<b>17</b>	If there is a Ward storage box, is the top no less than 712mm and no greater than 864mm above the floor?	Yes	No				
<b>18</b>	Is there an accessible Examination Table with adjustable height features?	Yes	No				Install one
<b>19</b>	Is there an accessible bed with adjustable height features?	Yes	No				

**LEVEL 3 – Accessible Furniture, Fixtures and Utilities (Doors, Water, Toilets and Washrooms).**

S/No	CHECK	RESPONSE	PICTURE No.	REFERENCE	RELATED REMARK	POSSIBLE SOLUTIONS
1	If there are two doors in a series, e.g. vestibule, is the distance between the doors at least 1220mm plus the width of the doors when swinging into the space?	Yes No				Remove inner door if there is a vestibule with two doors Change door swing
2	Are there designated accessible toilets? (Either for each sex, or unisex.)	Yes No Total No of Toilets: No of Accessible Toilets:				Reconfigure toilet rooms, combine toilet rooms to create one unisex accessible toilet room
3	Are there signs at inaccessible toilet rooms that give directions to accessible toilet rooms?	Yes No Total No Public Spaces: No of Accessible Public Spaces:				Install signs, Install tactile sign
4	If not all toilet rooms are accessible, is there a sign at each accessible toilet room with the International Symbol of Accessibility?	Yes No				Install sign
5	Is there a route to the accessible toilet room(s) that does not include the use of stairs?	Yes No				Alter route
6	On the signs at Toilet Rooms, do text characters contrast with their backgrounds?	Yes No				Alter sign

<b>7</b>	On the signs at Toilet Rooms, are text characters raised?	Yes	No				Alter sign
<b>8</b>	On the signs at Toilet Rooms, is there Braille?	Yes	No				Install Braille
<b>9</b>	Can the doors be opened easily using one hand?	Yes	No				Install lighter doors, install power-assisted or automatic door openers
<b>10</b>	In the Toilet Room, is there a clear path to at least one of each type of fixture, e.g. Water Closet, Wash Basin, etc., that is at least 910mm wide?	Yes	No				Remove obstructions
<b>11</b>	Is there clear floor space available for a person in a wheelchair to turn around, i.e. a circle at least 1525mm in diameter or a T-shaped space within a 1525-mm square?	Yes	No				Move or remove partitions, fixtures or objects such as trash cans. Reorient the door to swing outwards
<b>12</b>	Are the toilet fittings in colours contrasting with the wall and floor colours to be easily identifiable by persons with low vision?	Yes	No				Repaint
<b>13</b>	Is the bottom edge of the reflecting surface of the Mirror no higher than 1016mm above the floor?	Yes	No				Reposition
<b>14</b>	Can the faucet be operated easily?	Yes	No				Adjust faucet, replace faucet

<b>15</b>	Is there a grab bar at least 1070mm long on the side wall?	Yes	No				Install a grab bar.
<b>16</b>	Is the space between the wall and the grab bar 40mm?	Yes	No				Reconfigure grab bar
<b>17</b>	If the flush control is hand operated, is the operable part located no higher than 1220mm above the floor?	Yes	No				Move control, install sensor with override button no higher than 1220mm.
<b>18</b>	Move control, install sensor with override button no higher than 1220mm.	Yes	No				Relocate dispenser

**LEVEL 4 – Additional Access to other Amenities**

S/No	CHECK	RESPONSE	PICTURE No.	REFERENCE	RELATED REMARK	POSSIBLE SOLUTIONS
1	If there are multiple drinking fountains, are there for both people standing and people sitting.	Yes No				Install both options
2	Is there at least one telephone that has a Teletypewriter (TTY)?	Yes No				Install Teletypewriter (TTY)
3	Do signs that provide direction to public telephones also provide direction to the TTY?	Yes No				Add signs
4	Are announcements and notifications communicated using audiovisual options?	Yes No				
4	If there are fire alarm systems, do they have both flashing lights and audible signals?	Yes No				Install audible and visual alarms
6	Does at least one emergency exit and one muster point accessible?	Yes No				



# SECTION FOUR

Educational and Social Care Establishments (e.g. Day-Care Centres, Orphanages, NYSC Camps, Colleges, Universities and Religious Centres).

**LEVEL 1** – Accessible approach, entrance and wayfinding in buildings and facilities.

S/No	CHECK	RESPONSE	PICTURE No.	REFERENCE	RELATED REMARK	POSSIBLE SOLUTIONS
1	Is the approach to the school well maintained with a level surface?	Yes No				
2	Is the building easily identifiable with a branding or sign having contrasting colour and accessible typefacing for the fonts	Yes No				
3	Are kerb ramps provided at all level differences, between the road surface and building entrances?	Yes No				Reconfigure by repainting lines
4	Are there ramps next to the stairs?	Yes No				Mark access aisles
5	Are the locations of the ramps clearly identifiable with signs?	Yes No				Add a ramp Regrade to 1:20 maximum slope Add a lift if site constraints prevent other solutions
6	Is the ramp gradient no steeper than 1:12?	Yes No Measurement:				Regrade surface
7	Is the width of the ramp a minimum of 1200mm?	Yes No Measurement:				Create accessible route and relocate accessible spaces
8	Are there continuous handrails, on both sides, at a height of 760mm – 900mm from the floor?	Yes No				Install signs

					Yes	No				Reconfigure spaces
<b>9</b>	Is there a landing of 1500mm x 1500mm at the turning of the ramp?									
<b>10</b>	Is the surface of the ramp stable, firm and slip-resistant?				Yes	No				Repair uneven paving, fill small bumps and breaks with patches, replace gravel with asphalt or concrete.
<b>11</b>	Is there an edge protection on both sides of the ramp to prevent wheelchairs from falling off?				Yes	No	Measurement:			Change or move landscaping, furnishings or other items, and widen route
<b>12</b>	If there are stairs, are there continuous handrails, on both sides, at a height of 760mm – 900mm from the floor?				Yes	No	Measurement:			Widen route for passing space
<b>13</b>	Are the handrails painted in colours contrasting with the wall colour to be easily identifiable by persons with low vision?				Yes	No	Measurement:			Repaint
<b>14</b>	Is the location of emergency (fire escape) stairs and ramp clearly identifiable with a sign?				Yes	No	Measurement:			Alter ramp
<b>15</b>	Is it ensured that there are no open gaps in between the step risers?				Yes	No	Measurement:			Alter ramp
<b>16</b>	Is the step riser 150mm or less?				Yes	No				Resurface ramp



<b>17</b>	If there is an open space under the staircase, is it blocked off?	Yes No Measurement:				Relocate ramp lengthen ramp to decrease slope
<b>18</b>	Is there a level landing that is at least 1525mm long and at least as wide as a ramp:	At the top of the ramp? Yes No Measurement: At the bottom of the ramp? Yes No Measurement:				Alter ramp, Increase landing size
<b>19</b>	If the ramp has a rise higher than 152mm, are there handrails on both sides?	Yes No Measurement:				Add handrails
<b>20</b>	Is the top of the handrail gripping surface no less than 864mm and no greater than 965mm above the ramp surface?	Yes No Measurement:				Reconfigure or replace handrails Adjust handrail height
<b>21</b>	Is the handrail gripping surface continuous and not obstructed along the top or sides?	Yes No Measurement:				Reconfigure or replace handrails
<b>22</b>	To Prevent wheelchair casters and crutch tips from falling off: Does the surface of the ramp extend at least 300mm beyond the inside face of the handrail?	Yes No Measurement:				Add curb, add barrier, extend ramp width
<b>23</b>	Is the minimum unobstructed width of corridors at least 1200mm?	Yes No				

24	Is it ensured that there are no objects protruding more than 100mm from the walls in the corridors?	Yes	No					
25	Are all over hanging obstructions mounted above a minimum height of 2200mm from the floor, giving head clearance?	Yes	No					
26	Are rooms' doorways accessible?	Yes	No					Redesign to make it accessible
27	If the main entrance to a room is not accessible, is there an alternative accessible entrance?	Yes	No					Designate an entrance and make it accessible.
28	Can the alternative accessible entrance be used independently and during the same hours as the main entrance?	Yes	No					Ensure that accessible entrance can be used during the same hours as the main entrance
29	Do all inaccessible entrances have signs indicating the location of the nearest accessible entrance using the international symbol of accessibility?	Yes	No					Install signs on route before people get to inaccessible entrances so that people do not have to turn around and retrace route

30	Is the clear opening width of the accessible entrance door at least 820mm, between the face of the door and the stop, when the door is open 90 degrees?	Yes No Measurement:				Alter door, install offset hinges
31	On both sides of the door, is the ground or floor surface of the maneuvering clearance level (no steeper than 1:48)?	Yes No Measurement:				Remove obstruction, reconfigure walls, add automatic door opener
32	Is the door equipped with hardware that is operable with one hand and does not require tight grasping, pinching or twisting of the wrist?	Yes No				Replace inaccessible knob with lever, loop or push hardware, add automatic door opener
33	Are manual door accessories / hardware (handles, locks, etc.) located at a height of 800mm – 1000mm from the floor?	Yes No				Change hardware height
34	Is there a signage indicating the floor level on each floor?	Yes No				

**LEVEL 2 – Accessible goods/services being offered at a facility.**

S/No	CHECK	RESPONSE	PICTURE No.	REFERENCE	RELATED REMARK	POSSIBLE SOLUTIONS
1	Are there green boards in the classroom?	Yes No				Create accessible route
2	Is it ensured that the lower edges of green/black boards are not above 500mm from the floor so that children using wheelchairs can access them?	Yes No Total No Public Areas: No of Accessible Public Areas:				Create accessible route
3	Are all halls with seating capacity of 50 persons and above equipped with audiovisual systems?	Yes No				Remove objects, add tactile warning such as permanent planter or partial walls
4	Is there any form of light glare in the classroom?	Yes No				Install if necessary an elevator or lift if necessary, offer goods and services on an accessible story.
5	If a lift is provided, can it be used without assistance?	Yes No				Reconfigure for independent use
6	Is there a clear floor space at least 760mm wide by at least 1220mm long for a forward or parallel approach?	Yes No				Reconfigure to provide a parallel or forward approach

7	If there are signs that provide direction to or information about interior spaces: Do text characters contrast with their backgrounds?	Yes No				Install signs with contrasting characters
8	If there is a storage box, that the top no less than 712mm and no greater than 864mm above the floor?	Yes No				Replace inaccessible knob with lever, loop or push hardware and add automatic door



**LEVEL 3 – Accessible Furniture, Fixtures and Utilities (Doors, Water, Toilets, Washrooms, Kitchen and Sport Areas).**

S/No	CHECK	RESPONSE	PICTURE No.	REFERENCE	RELATED REMARK	POSSIBLE SOLUTIONS
1	Are there ramps at all door ways than have more 38mm change in level?	Yes No				Install a ramp
2	If toilet rooms are available to the public, are there toilet rooms accessible? (Either for each sex, or unisex.)	Yes No Total No Public Toilets: No of Accessible Public Toilets:				Reconfigure toilet rooms, combine toilet rooms to create one unisex accessible toilet room
3	Are there signs at inaccessible toilet rooms that give directions to accessible toilet rooms?	Yes No Total No Public Spaces: No of Accessible Public Spaces:				Install signs, Install tactile sign
4	If not all toilet rooms are accessible, is there a sign at the accessible toilet room with the International Symbol of Accessibility?	Yes No				Install sign
5	Is there a route to the accessible toilet room(s) that does not include the use of stairs?	Yes No				Alter route
6	On the signs at Toilet Rooms, do text characters contrast with their backgrounds?	Yes No				Alter sign
7	On the signs at Toilet Rooms, are text characters raised?	Yes No				Alter sign
8	On the signs at Toilet Rooms, is there Braille?	Yes No				Install Braille

<b>9</b>	Can the door be opened easily using one hand?	Yes No				Install lighter doors, install power-assisted or automatic door openers
<b>10</b>	In the Toilet Room, is there a clear path to at least one of each type of fixture, e.g. Water Closet, Wash Basin, etc., that is at least 910mm wide?	Yes No				Remove obstructions
<b>11</b>	Is there clear floor space available for a person in a wheelchair to turn around, i.e. a circle at least 1525mm in diameter or a T-shaped space within a 1525-mm square?	Yes No				Move or remove partitions, fixtures or objects such as trash cans.
<b>12</b>	Are the toilet fittings in colours contrasting with the wall and floor to be easily identifiable by persons with low vision?	Yes No Measurement:				Repaint
<b>13</b>	Is the bottom edge of the reflecting surface of the Mirror no higher than 1016mm above the floor?	Yes No				Reposition
<b>14</b>	If there is a coat hook, is it no less than 380mm and no greater than 1220mm above the floor?	Yes No				Reposition
<b>15</b>	Are pipes insulated or otherwise configured to protect against contact?	Yes No				Install insulation, install cover panel

		Yes	No						
<b>16</b>	Can the faucet be operated easily?								Adjust faucet, replace faucet
<b>17</b>	Is there a grab bar at least 1070mm long on the side wall?	Yes	No						Install a grab bar.
<b>18</b>	Is the space between the wall and the grab bar 40mm?	Yes	No						Reconfigure grab bar
<b>19</b>	If the flush control is hand operated, is the operable part located no higher than 1220mm above the floor?	Yes	No						Move control, install sensor with override button no higher than 1220mm
<b>20</b>	Move control, install sensor with override button no higher than 1220mm.	Yes	No						Relocate dispenser



**LEVEL 4** – Additional Access to other Amenities

<b>S/No</b>	<b>CHECK</b>	<b>RESPONSE</b>	<b>PICTURE No.</b>	<b>REFERENCE</b>	<b>RELATED REMARK</b>	<b>POSSIBLE SOLUTIONS</b>
<b>1</b>	If there are multiple drinking fountains, are there for both people standing and people sitting.	Yes No				Install both options
<b>2</b>	Does at least one telephone have a volume control?	Yes No				Install volume control, replace telephone with one that has volume control
<b>3</b>	Does at least one telephone have a Teletypewriter (TTY)?	Yes No				Install Teletypewriter (TTY)
<b>4</b>	Do signs that provide direction to public telephones also provide direction to the TTY?	Yes No				Add signs
<b>5</b>	If there are fire alarm systems, do they have both flashing lights and audible signals?	Yes No				Install audible and visual alarms
<b>6</b>	Does at least one emergency exit and one muster point accessible?	Yes No				

## SCORING:

LEVEL	No of Applicable Questions [A]	No of YES [B]	B/A = [C]	Score
1				C x 4
2				C x 3
3				C x 2
4				C x 1
<b>TOTAL</b>				

**KEY:**

**Score**      **Interpretation**

7.5 – 10 Accessible

5.0 – 7.4

Moderately Accessible

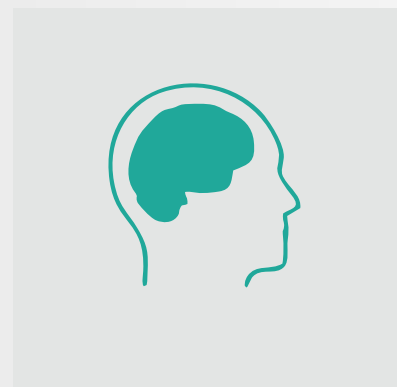
2.5 – 4.9

Poorly Accessible

0 – 2.4

Inaccessible





## OUR HANDLES

   @Inclusivefriends

 info@Inclusivefriends.org

 www.Inclusivefriends.org